

Overpressure/ Depositional Analysis of Parts of Onshore (X-Field) Niger Delta Basin Nigeria, Based on Well Logs Data.

Obi, D. A¹. George, A.M² And Ofem, L. O.³.
1&3 Geology Department University of Calabar, Nigeria.
2. Physics Department University of Calabar, Nigeria

Abstract: Overpressure in the world's sedimentary basins are known to be allied with permeability barriers, tectonics, shale digenesis, basin structure and undercompaction factors. The Niger Delta basin has many overpressured zones with different depositional environments. This study was done using six drilled wells log suits in an x- field (Gamma ray log, deep induction log, Density log, and sonic log). The data was acquired from Chevron Nigeria Ltd in ascii softcopy format, which was analysed using both manual method and computer processed interactive petrophysics (IP) version 3.6 software. The logs were loaded and printed to hardcopies and digitization done at 5m interval to extract the data across the log suits. Characteristic curve patterns along the gamma log were delineated for shape patterns such as bell shape, funnel shape, and blocky to reveal paleoenvironments of the study area. The results indicate twenty one (21) overpressure zones within the wells, three (3) subsurface overpressure zones are correlated across the wells at depth interval between 3000m – 3200m for wells A,B,C,D,E and 2900m – 3000m for wells E and C , and 3600m – 3700m for wells C and F respectively, these over pressured zones occurred within a dominantly fluvial channel with minor deltaic distribution and barrier bar complexes. The areas identified as overpressured zones should be critically examined during drilling to avoid rig blow outs.

I. Introduction

Over pressure zones are known to be allied with permeability barriers tectonics, shale diagenesis, basin structure and undercompaction (Ogbobe, 1997) Egehet, al. 2001; Olatubosum, 2014). The Niger Delta is one of the most prolific oil province in the world. Exploration activities is still ongoing with reports of the presence of overpressure zones which has been a source of worry to oil and gas investors. This study is aimed at using available drilled well log suites (resistivity, Gamma, sonic and Density) Fig.1 to address the challenges of identifying the subsurface overpressure zones and possible environments of deposition within the onshore Niger Delta region. There are reported research work on overpressure zones within the offshore areas (Egehet, al. 2011, Olatubosum 2014). However, subsurface literature on the onshore overpressure analysis in scars. This work will enhance safe drilling conditions when areas with overpressure zones in the subsurface are drilled.

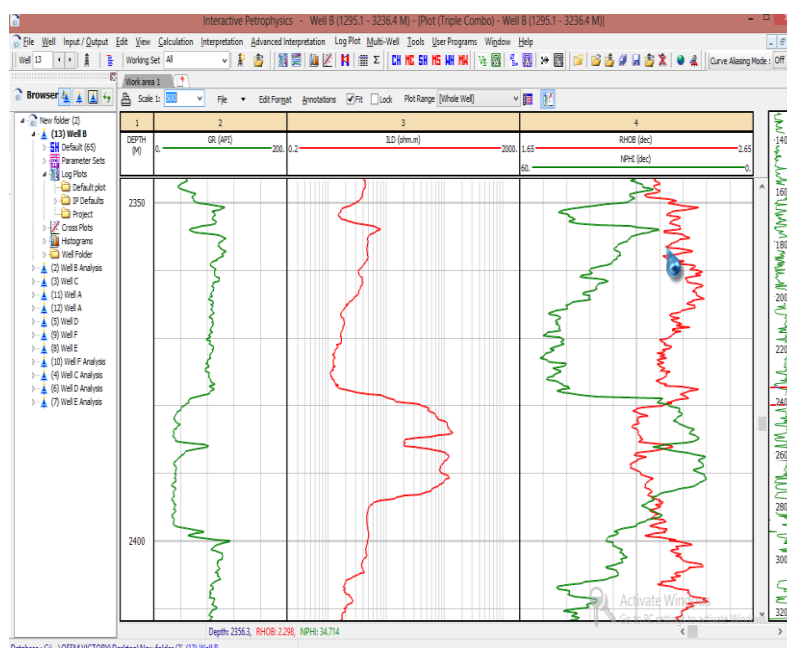


Fig 1. Printed hard copy of the composite logs

II. Geology of the Study Area

The Niger Delta is an arcuate Delta with sedimentary rocks in excess of 12 km in thickness, it's a prolific hydrocarbon producing basin (Egedewa 1981, evamy et.al.1978). Geological and geophysical evidence supports it's emergence after the formation of the Benue trough and the Anambra basin. Geophysical work from researchers indicate that

is the thickest basin in Nigeria with growth Faults and roll-over anticlines as its major structural features (Ako et, al. 2004, Obi et, al. 2008; Okiwelu et, al. 2012; Okiwelu et, al. 2013; corredor, 2005, Hospers 1965).

The tertiary Niger Delta is subdivided into three formations reviewed by many authors (short and stauble 1965, Avbobvo, 1978; DoustandOmatola 1989; whitman, 1982; Reijers, 1996; Evamy, 1978). The Akata formation at the base of the delta is of marine origin and is composed of thick shale sequence (potential source rock), turbidites sand (potential reservoir) in deep water), and minor amount of clays and silt (stracher 1995), this formation is overlain by the Agbada formation (Eocene – Recent) which is the major petroleum bearing unit consisting of alternations of sandstones and shales in alternate amounts of equal proportions at the its base and mostly sandstones at the upper portions with little shale interbeds (Avbobvo 1978, Reijers1997, Burke 1972). Overlaying the Agbada formation is the benin formation coastal plain sands (Fig 2.0).

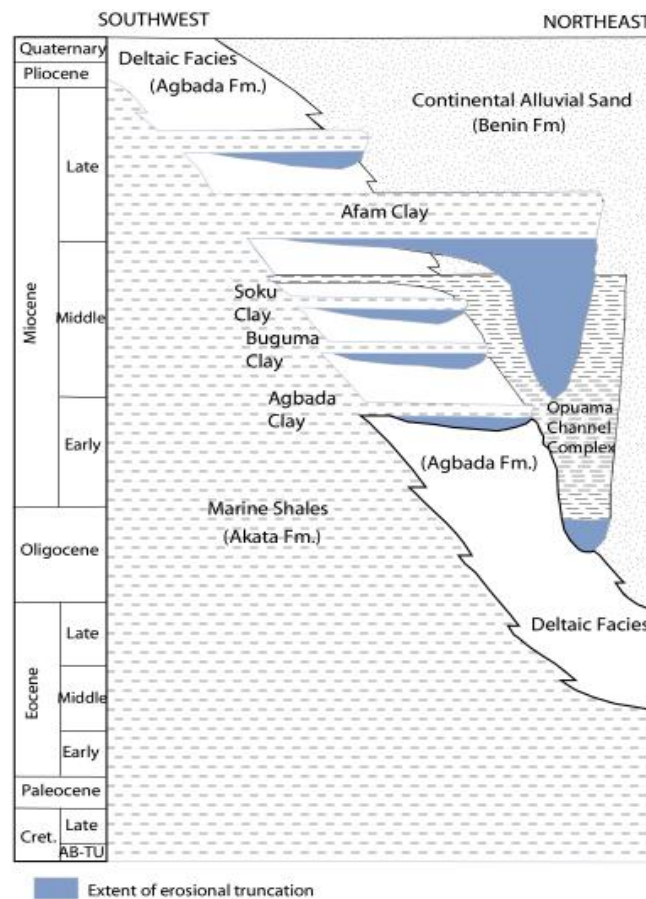


Figure 2: Stratigraphic column of the Niger Delta (modified from Doust and Omatsola, 1989).

III. Data Analysis

Six (6) well log suits which include Gamma ray log, deep induction resistivity log, density log and sonic log were obtained from Agip oil company ltd from an x- field in the onshore Niger Delta. The logs were supplied in soft copies ascii Log format. These log were processed both manually and with computer processed technique of uploading log data. The interactive petrophysics (IP) version 3.6 software was used in loading and printing the hard copies fro which manual analysis was performed. An initial quick look evaluation using the Gama ray long serrating areas with high Gamma Ray (API) as shales and low Gamma ray (API) as sands, then the digitization of all the logs using 5m intervals for the various physical parameters were extracted to depth interval of 3500 m. Overpressure analysis was based on the premise that shale remain the preferred lithology for pore pressure interpretation since they are more responsive to over pressure than other rocks. There (3)logs which include deep induction resistivity, sonic, and density logs were used for the compaction trend evaluation or geopressure analysis. The extracted data were plotted (Using excel software) as logsparamters of digitized physical parameters against depth at 5 m intervals (Fig 3, 4, 5, 6, 7, 8). The principle behind detecting under compacted zones is that the detection of normal compaction trend or undercompaction is by deviation from the normal of increasing physical parameters with depth, these areas are refered to as overpressured (Egeh et, al. 2001, Opara and Onuoha, 2001, asquith and Gibson 1982). The three (3) logs were analyzed for areas of these deviations tops and bottoms of these deviations were extracted from these logs as areas of overpressured zones (Table1.0).

Also, using a quick look method, the curve shapes or patterns, the various reservoirs were determined from the Gamma ray log and analysis of the different environment of deposition was made from the signature shape of the Gama ray logs (bell, funnel, blocky or cylindrical) (Burke, 1972 Asquith Gibson , 1982.) Fig.9. A total of forty (40) reservoirs internals was extracted from the gamma ray logs and log shapes with characteristic patterns was used to deduce depositional

environments (Table 2.0, 3.0, 4.0, 5.0, 6.0). From the forty (40) reservoirs and their boundary source rocks, about thirty (30) were fluvial channel sands and ten (10) barrier bars, mouth bars and deltaic distributaries environments.

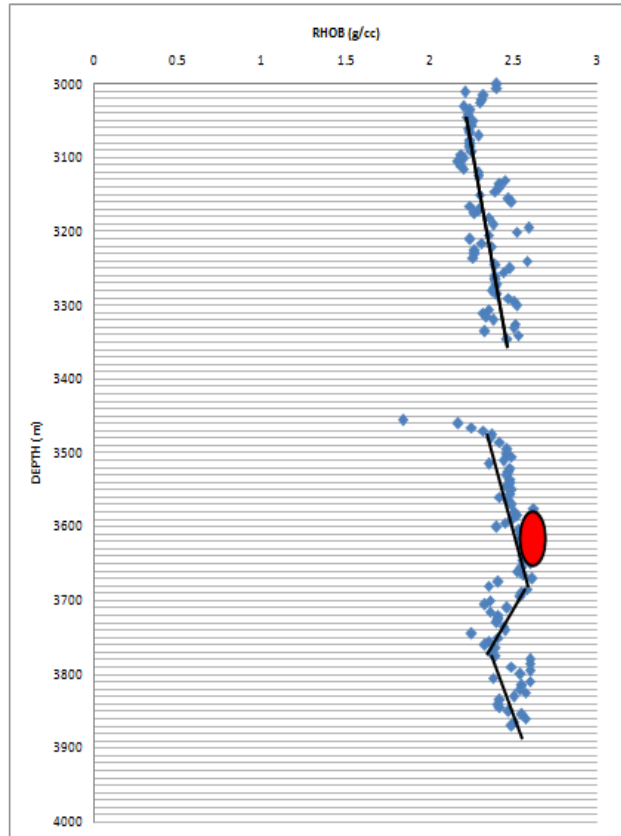


Figure 3a. compaction trend for Well F on a plot of bulk density versus depth.

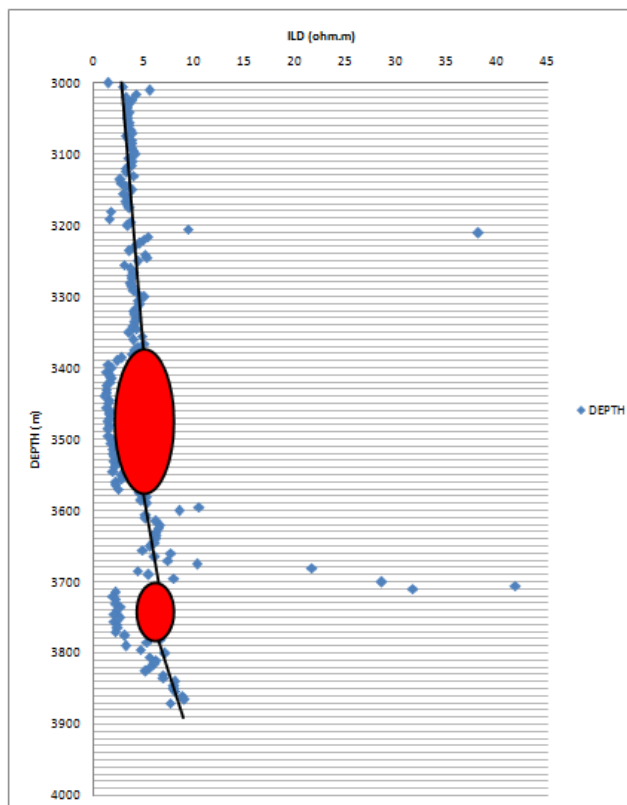


Figure 3b.: Compaction trend for Well F on a plot of deep resistivity versus depth.

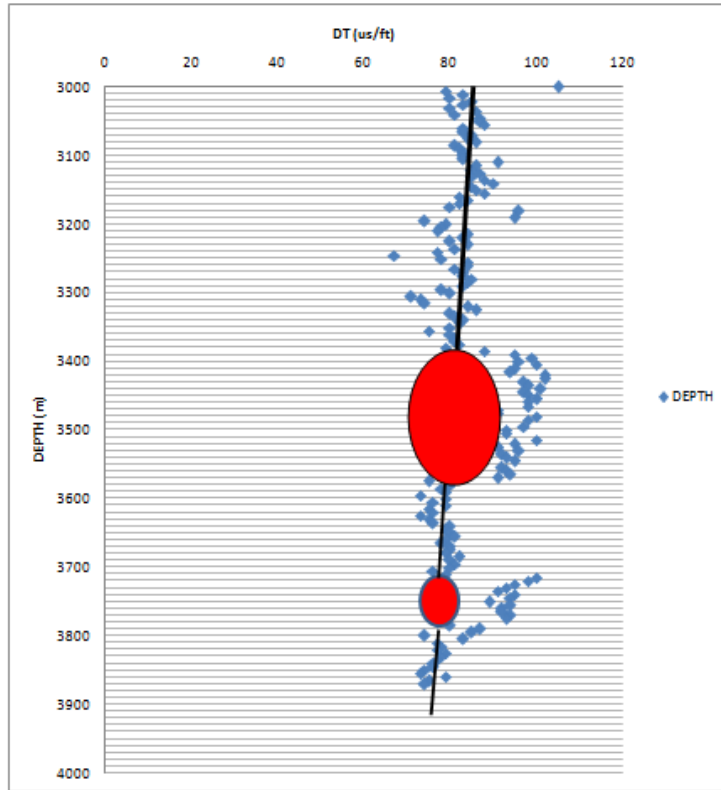


Figure3c: Compaction trend for Well F on a plot of sonic log interval transit time versus depth.

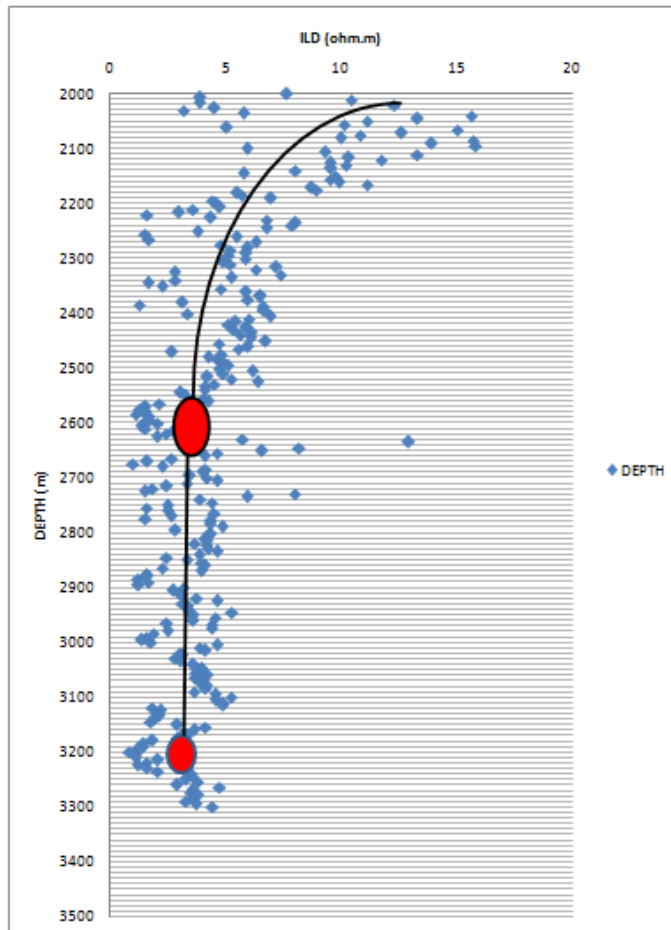


Figure4a: Compaction trend for Well D on a plot of deep resistivity versus depth.

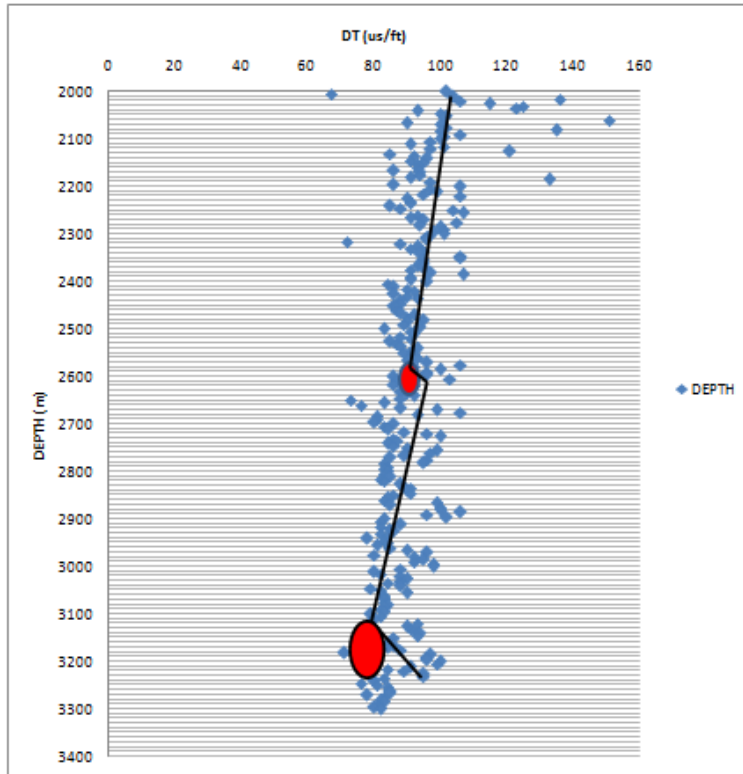


Figure4b: Compaction trend for Well D on a plot of sonic log interval transit time versus depth.

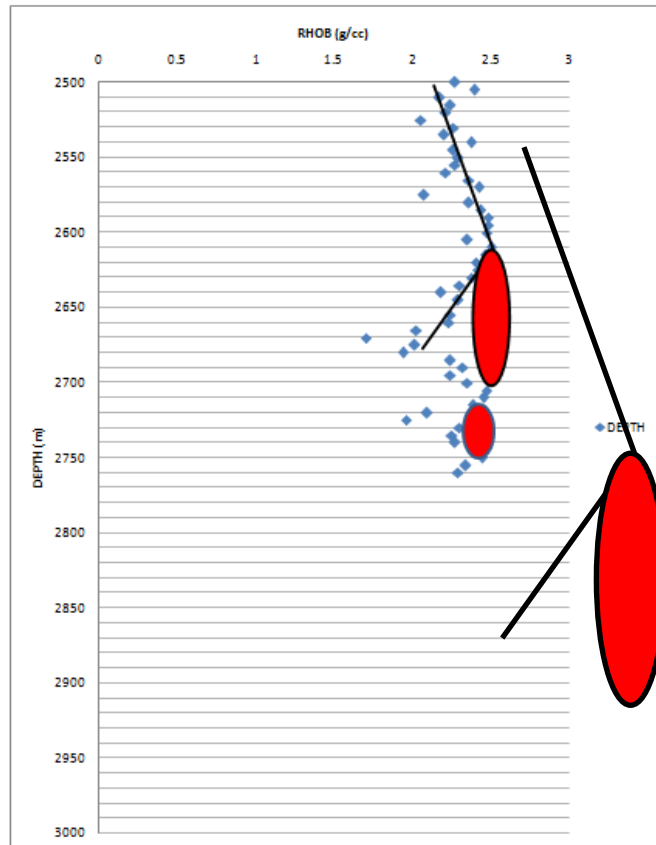


Figure4c: Compaction trend for Well D on a plot of bulk density versus depth.

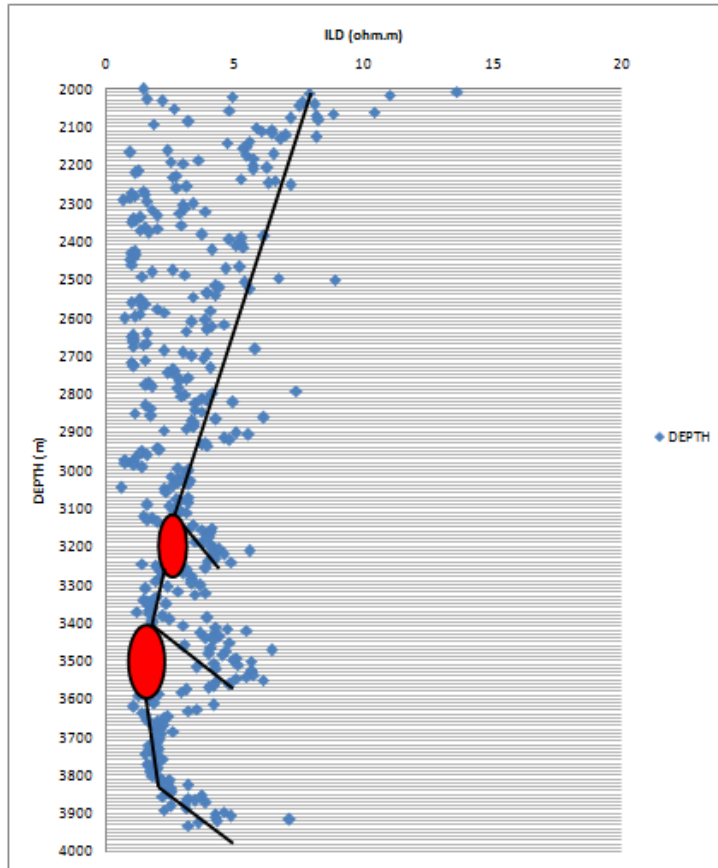


Figure 5a: Compaction trend for Well E on a plot of deep resistivity versus depth.

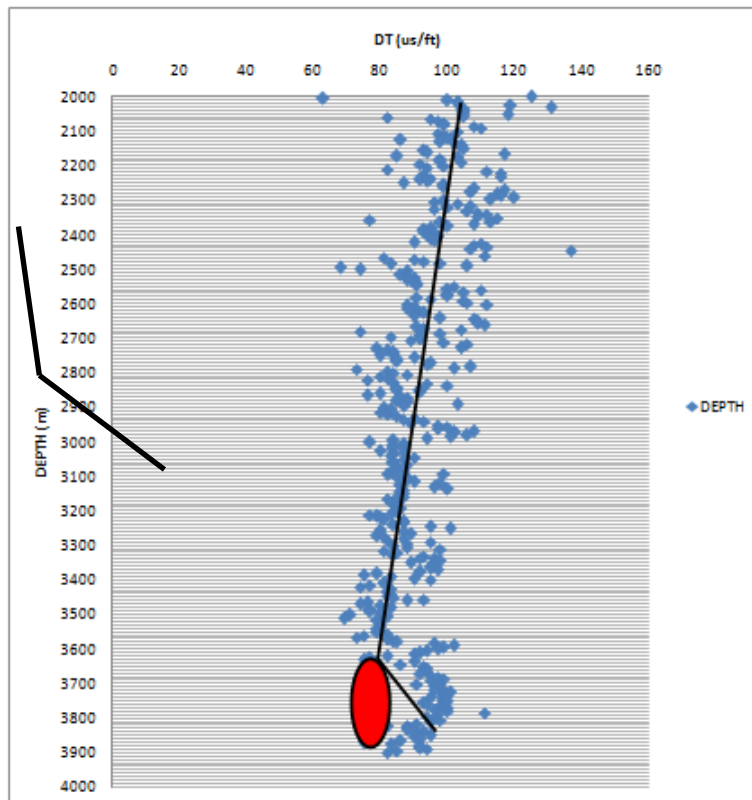


Figure 5b: Compaction trend for Well E on a plot of sonic interval transit time versus depth.

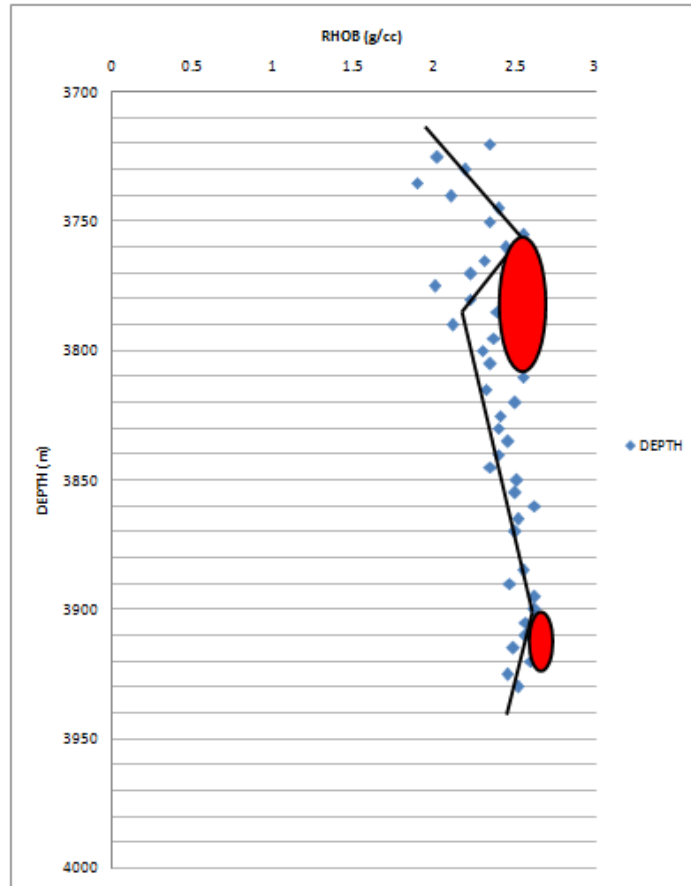


Figure 5c: Compaction trend for Well E on a plot of bulk density versus depth.

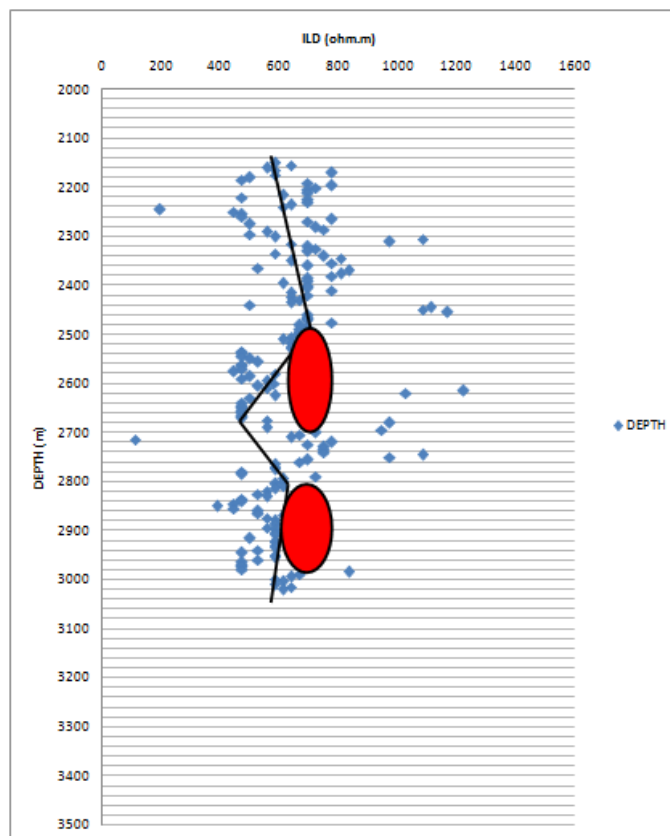


Figure 6a: Compaction trend for Well C on a plot of deep resistivity versus depth.

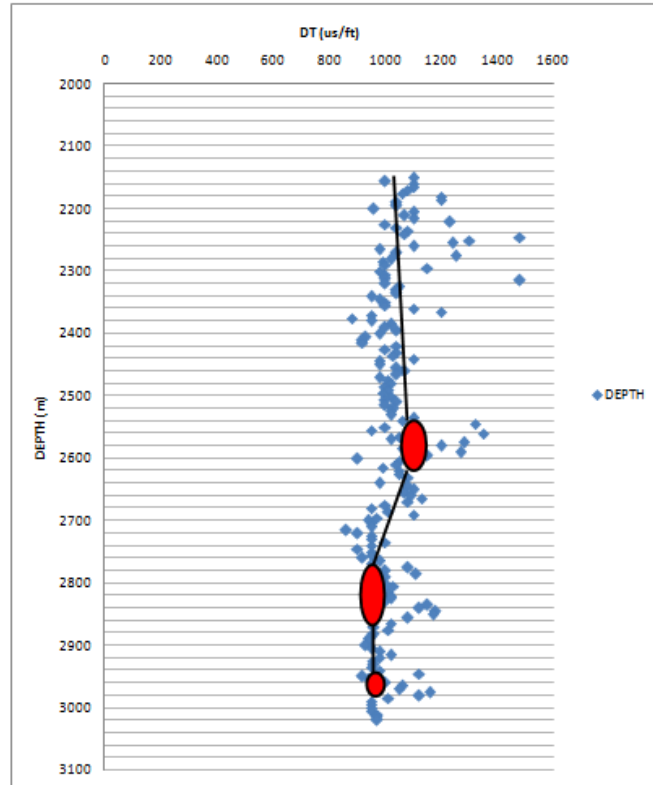


Figure 6b : Compaction trend for Well C on a plot of sonic interval transit time versus depth.

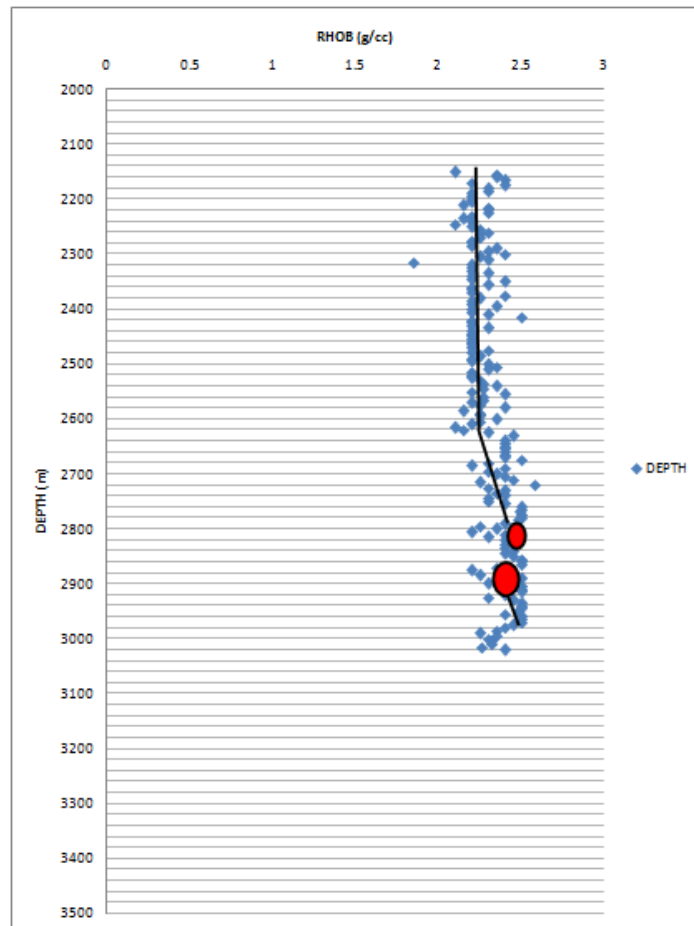


Figure 6c: Compaction trend for Well C on a plot of bulk density versus depth.

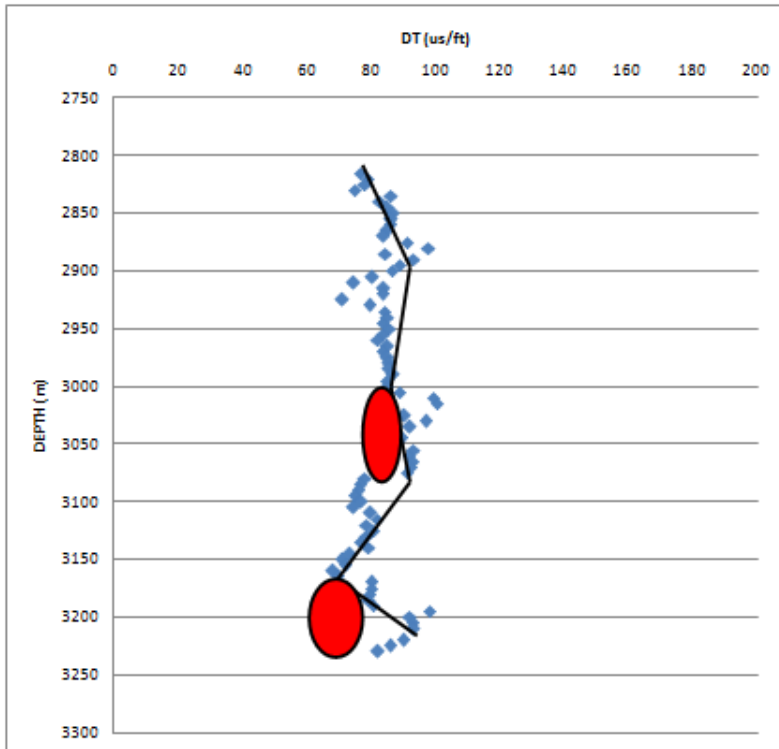


Figure 7a: Compaction trend for well B on a plot of sonic interval transit time versus depth.

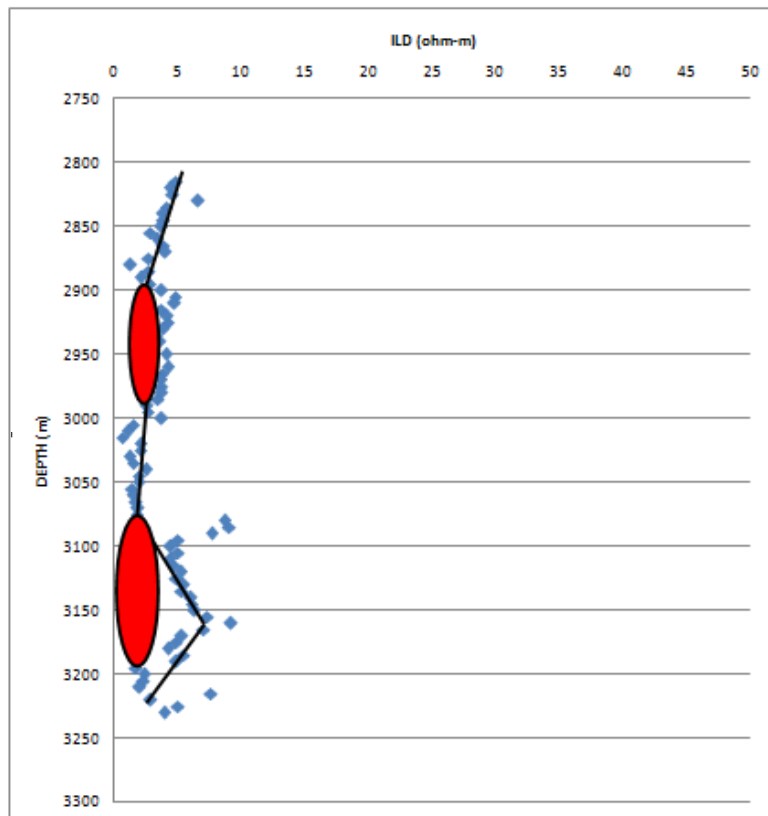


Figure 7b: Compaction trend for well B on a plot of deep resistivity versus depth.

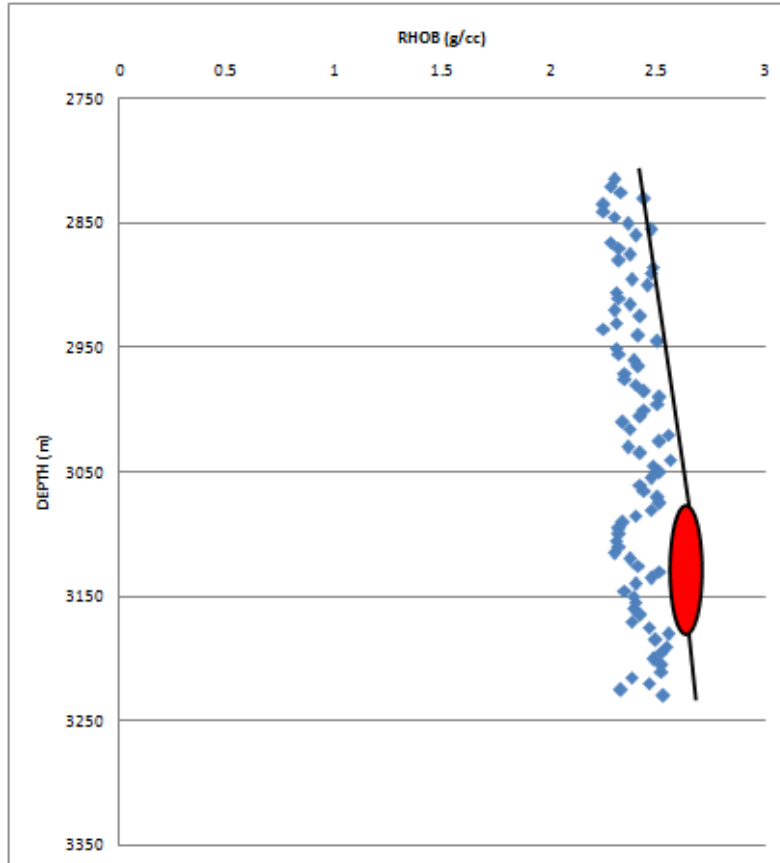


Figure 7c: Compaction trend for well B on a plot of bulk density versus depth.

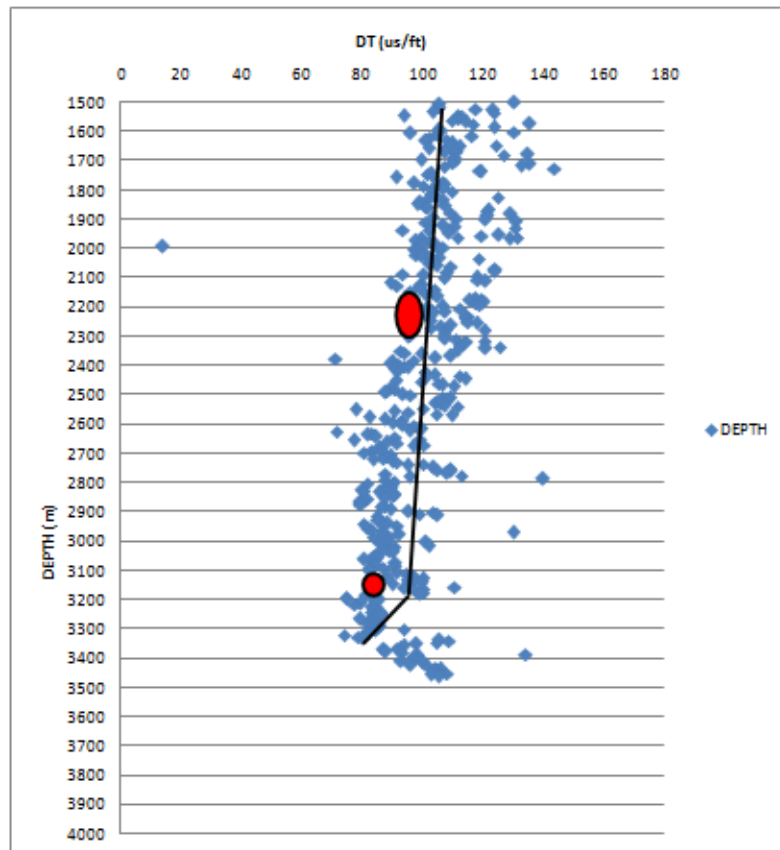


Figure 8a: Compaction trend for well A on a plot of sonic log interval transit time versus depth.

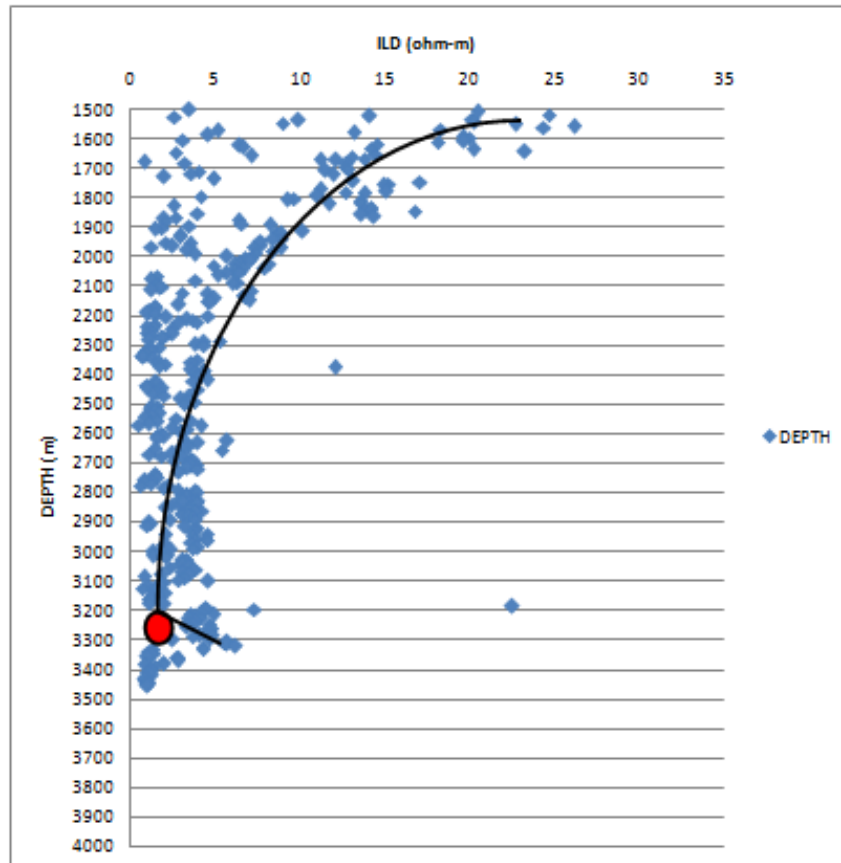


Figure 8b: Compaction trend for well A on a plot of true resistivity versus depth.

Table 1.0: overpressured zones within the study area from digitized log of depth and geophysical parameters

| Well | Log | Top | Bottom | Thickness |
|------|------------------------|--------|--------|-----------|
| A | Density/RHOB/g/cc | - | - | - |
| | Resistivity/ILD/ohm.m | 3200 | 3300 | 100 |
| | Sonic/ DT us/ft | 3000 | 3200 | 200 |
| B | Density RHOB/(g/u) | 2900 | 2980 | 80 |
| | Resistivity/ILD/ohm.m) | 3080 | 380 | 100 |
| | Sonic/ DT us/ft | 3000 | 3080 | 80 |
| C | Density/RHOB/g/cc | 2900 | 3000 | 100 |
| | Resistivity/ILD/ohm.m | 2500 a | 2620 a | 120 |
| | Sonic/ DT us/ft | 2890 b | 3000 b | 110 |
| D | Density/RHOB/g/cc | 2790 | 2890 | 100 |
| | Resistivity/ILD/ohm.m | 2610 | 2670 | 60 |
| | Sonic/ DT us/ft | 3000 | 3120 | 120 |
| E | Density/RHOB/g/cc | 3100 | 3200 | 100 |
| | Resistivity/ILD/ohm.m | 3760 | 3790 | 30 |
| | Sonic/ DT us/ft | 3100 a | 3200 a | 100 |
| F | Density/RHOB/g/cc | 3400 b | 3600 b | 200 |
| | Resistivity/ILD/ohm.m | 3650 | 3850 | 200 |
| | Sonic/ DT us/ft | 3350 | 3450 | 100 |
| F | Density/RHOB/g/cc | 3650 a | 3750 a | 100 |
| | Resistivity/ILD/ohm.m | 3390 b | 3570 b | 180 |
| | Sonic/ DT us/ft | 3720 a | 3770 a | 50 |
| | Sonic/ DT us/ft | 3400 b | 3570 b | 170 |

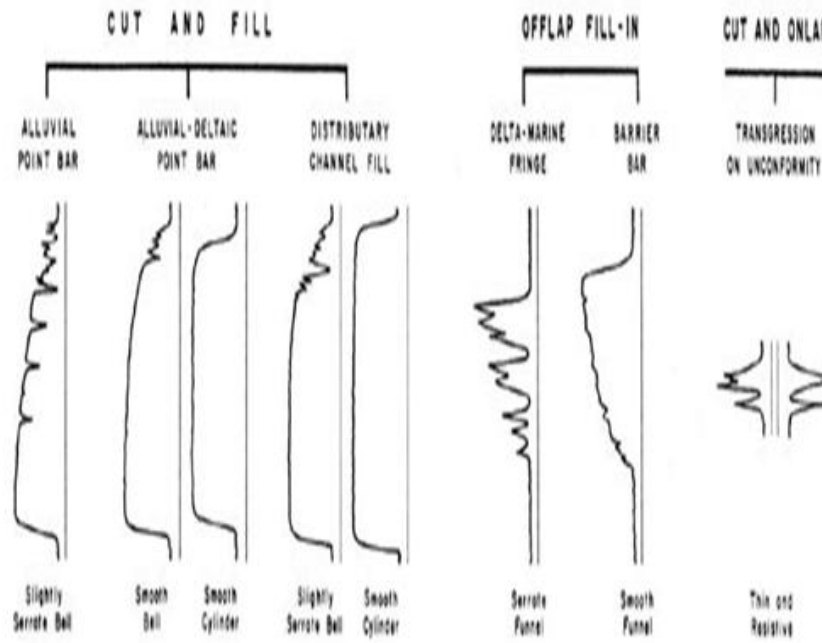


Figure 9: Schematic illustration of gamma-ray logs of sandstone beds or deposits and their environment of deposition.

Table 2: Depositional environments from reservoirs in well F

| Sand Units | Reservoir interval | Log shape and characteristics | Depositional environment |
|------------|--------------------|--------------------------------------|-----------------------------|
| 1 | 1915-1964 | Cylindrical: smooth | Fluvial channel, tidal sand |
| 2 | 2085-2100 | Bell shaped: smooth | Alluvial fans, point bars |
| 3 | 2157-2175 | Cylindrical: serrated | Deltaic distributaries |
| 4 | 2288-2322 | Cylindrical: serrated | Fluvial channel |
| 5 | 2370-2395 | Cylindrical: serrated | Fluvial channel |
| 6 | 2525-2570 | Funnel/blocky: serrated | Mouth bars, delta marine |
| 7 | 2604-2625 | Bell/funnel: 3fold stacked | Stream mouth bar |
| 8 | 2700-2713 | Cylindrical: smooth | Fluvial channel |
| 9 | 2810-2876 | Cylindrical: serrated, 3fold stacked | Barrier bar complex |
| 10 | 3003-3117 | Cylindrical/funnel: serrated | Deltaic distributaries |
| 11 | 3205-3250 | Cylindrical: Fairly serrated | Fluvial channel |
| 12 | 3303-3317 | Cylindrical: serrated | Fluvial channel |
| 13 | 3695-3715 | Cylindrical: serrated | Fluvial channel |
| 14 | 3910-3925 | Cylindrical: smooth | Fluvial channel |

Table 3: Depositional environments from reservoirs in well E

| Sand Units | Reservoir interval | Log shape and characteristics | Depositional environment |
|------------|--------------------|------------------------------------|-----------------------------|
| 1 | 1900-1952 | Cylindrical: serrated | Fluvial channel, tidal sand |
| 2 | 2058-2128 | Cylindrical: alternation of shale | Fluvial channel, |
| 3 | 2500-2543 | Cylindrical: highly serrated | Fluvial channel, |
| 4 | 2785-2820 | Cylindrical/bell: stacked/serrated | Fluvial, point bars, |
| 5 | 2900-2932 | Funnel/blocky: serrated | Mouth bars, deep sea fans, |
| 6 | 3205-3242 | Funnel: serrated | Barrier bar, |
| 7 | 3412-3437 | Funnel/blocky: serrated | Mouth bars, delta marine, |
| 8 | 3495-3523 | Cylindrical: serrated | Fluvial, tidal sands, |

Table 4: Depositional environments from reservoirs in well C

| Sand Units | Reservoir interval | Log shape and characteristics | Depositional environment |
|------------|--------------------|-------------------------------|---------------------------|
| 1 | 2183-2214 | Cylindrical: serrated | Fluvial, tidal sands, etc |
| 2 | 2368-2415 | Cylindrical: serrated | .. |
| 3 | 2444-2462 | Cylindrical: smooth | .. |
| 4 | 2613-2625 | Cylindrical: smooth | .. |
| 5 | 2983-3020 | Cylindrical: serrated | .. |
| 6 | 3288-3315 | Cylindrical: serrated | .. |

Table 5: Depositional environments from reservoirs in well D

| Sand Units | Reservoir interval | Log shape and characteristics | Depositional environment |
|------------|--------------------|---------------------------------------|--------------------------|
| 1 | 2030-2092 | Cylindrical: serrated | Fluvial, tidal, |
| 2 | 2257-2310 | Cylindrical: smooth | .. |
| 3 | 2403-2463 | Cylindrical: serrated | .. |
| 4 | 2798-2823 | Cylindrical: smooth | .. |
| 5 | 3005-3052 | Cylindrical: serrated | .. |
| 6 | 3150-3180 | Funnel/blocky: 2fold stacked/serrated | Mouth bars, delta |

Table 6: Depositional environments from reservoirs in well B

| Sand Units | Reservoir interval | Log shape and characteristics | Depositional environment |
|------------|--------------------|-------------------------------|--------------------------|
| 1 | 2048-2065 | Cylindrical: smooth | Fluvial, tidal sand, etc |
| 2 | 2327-2350 | Cylindrical: smooth | .. |
| 3 | 2378-2400 | Cylindrical: smooth | .. |
| 4 | 2520-2550 | Cylindrical: serrated | .. |
| 5 | 2683-2733 | Cylindrical: serrated | .. |
| 6 | 3140-3167 | Cylindrical: serrated | .. |

IV. Discussion of Result

The results from the six (6) wells studied reveals the presence of twenty one (21) overpressured zone within the wells. Well E has the largest overpressure depth range of 200m from sonic log. Most other zones has thickness of within 100m. Overpressured zones thickness from resistivity log, indicate that well B =100m, well C= 120m well D = 120m, well F = 180m. These collaborates well with sonic log over pressured depth well B = 80m, well C = 100m, well D= 100m; well E=200m. Results from bulk density log has depth of overpressured zones at well C = 100m and well F=100m (Table 1.0).

Generally, there is an agreed depth range from all the logs for which overpressure occurs between 3000-3200m within wells ABCD and E while wells C and F has overpressure zones at depth between 2900m- 3-00m and 3600m- 3700m respectively. So there are basically three (3) subsurface zones that are experiencing over pressures within the studied field. The depositional environments deduced from Gamma ray log varied from fluvial channel to barrier bars and mouth bars sands. Wells B, C, D and F are dominantly fluvial channel environments with minor mouth bar and deltaic distributaries sands which signify that the x-field is dominantly a fluvial channel environment.

V. Conclusion

Overpressure zones within six (6) wells in an x- field reveals the presence of twenty one (21) subsurface zones within the wells experiencing overpressures. However, the depth ranges of occurrence when considered across the wells indicate only three major overpressured zones between 3000 – 3200 across well A, B, C, D and E and wells F and C at depths at 2900m -3000m and 3600m – 3700m respectively. The thickness of these zones vary between 100 – 200m. Also, the major paleoenvironment within the field is the fluvial channel environment. Since overpressures zones may cause rly blow outs it’s important that extreme precaution be taken while drilling in this field.

References

- [1]. Ako, B.D., Ojo, S. B., Okereke, C. S., Fieberg, F.C., Ajayi, T. R., Adepetum, A. A., Afolayan, J. F. (2004). Observation from gravity magnetic data Interpretation of the Niger Delta. *Nigerian Association of Petroleum Explorationist Bulletin* 13 (1) 50-69.
- [2]. Asquith, G. B. and Gibson, C. (1982). Basic well log analysis for geologist: methods in exploration series, 3, 99-117. *American Association of Petroleum Geologist*, 3, Tulsa Oklahoma.
- [3]. Avbovbo, A.A (1978c). Tertiary lithostratigraphy of Niger Delta: *American Association of Petroleum Geologist Bulletin*, V. 62, P. 295 – 300.
- [4]. Burke, K. (1972). Longshore drift submarine canyous, and submarine fans in development of Niger Delta: *American Association of Petroleum Geologist* V. 56, P. 1975 – 1983.
- [5]. Corredor, F., Shaw, H. J. and Bilotti, F. D. (2005). Structural styles in deep water fold and thrust belts f the Niger Delta. *American Association of petroleum Geologist Bulletin* (89) pp. 753 – 780.
- [6]. Doust, N. and Omatsola, E. (1989). Niger Delta In Divergent passive margin basins, J. D. Edwards and P. A. Santogrossi, eds., *AAPG MEMOIR* 18, 201 -238.
- [7]. Egeh, E. U. Okereke, C. S. and Olagundoye, O. O. (2001). Porosity and compaction trend in Okan field (Western Niger Delta) based on well log data. *Global journal of geological Science* vol 2. No. 2, 97 -102.
- [8]. Ejedawe, J. E. (1981) Patterns of incidence of oil reserves in Niger Delta basin. *American Association of Petroleum Geologist*, V. 65p. 1574 – 1585.
- [9]. Evamy, B.D. Haremboure, J. Kamerling, P., Knaap, W. A. Molloy, F. A and Rowlands, P. H. (1978). Hydrocarbon habitat of tertiary Niger Delta: *American Association of petroleum Geologist Bulletin*, V. 62. P. 277-298.
- [10]. Hospers, J. (1965). Gravity field and structure of the Niger Delta, Nigeria, West Africa: *Geological society of American Bulletin*, V. 76, p. 407-422.
- [11]. Obi, D. A. Okereke, C. S., Egeh, U. E., and Olagundoye, O. O. (2008). Aeromagnetic modeling in evaluating the hydrocarbon potentials of the basement of the CalabarFlank, South eastern Nigeria. *Journal of mining Geology* vol. 44 (2) 151- 160.
- [12]. Ogbobe, C. C. (1997). The Application of MWD logging techniques in the Niger Delta complex: *PGD thesis submitted to the Department of Geological sciences, NnamdiAzikiwe University, Akwa* 40 pp.
- [13]. Okiwelu, A. A., Okwueze, E. E. and Unde, I.A (2012).3D modeling and basement tectonics of the Niger Delta basin from Aeromgneticdata. *Intech open access Publishers*.
- [14]. Okiwelu, A. A., Ofrey-Kulo, O. and Ude, I. A. (2013). Interpretation of regional magnetic field data offshore Niger Delta reveals relationship between deep basement architecture and hydrocarbon targets. *Journal of science research* vol 2 issue 1 page 13 -32.
- [15]. Olagundoye, O. O. (2004). Geophysical study of the basin structure of the Anambra frontier basin, S. E. Nigeria. *Ph.D thesis, University of Calabar, Nigeria*.
- [16]. Opara, A. I. and Onuoha, K.M. (2009). Over pressure and trap Intergrated studies in parts of the onshore, Niger Delta basin: Implications of hydrocarbon exploitation and prospectivity *SPEJ* 240-242.
- [17]. Reijer, T. J. A, (1996). *Selected chapter on Geology*. A case study of the Niger Delta. Shell petroleum Development company 113- 114.
- [18]. Reijer, T. J. A., Petters, S. W. and Nwajide, C. S. (1997). The Niger Delta basin in Selley, R. C., ed, *African Basins – sedimentary basin of the world* 3: *ArmsterdamElsevier Science*, pp. 151 – 173.
- [19]. Short, K. C; and Stauble, A. J. (1965). Outline of Geology of Niger Delta: *American Association of Petroleum Geologist Bulletin*, V. 51, P. 761-779.
- [20]. Stacher, P. (1995). Present understanding of the Niger Delta hydrocarbon habitat, in, Oti M. N., and Postma, G., eds *Geology of Deltas*: Rotterdam, A. A. Balkema, p. 257 -267.
- [21]. Whiteman, A. (1982). *Nigeria: It is petroleum Geology, resources and potentials* Vol 1 & 2 Graham and trotman Ltd: London. UK.